

THE MURRAY

HONG KONG

A NICCOLO HOTEL

 MICHELIN 2025



PRESTIGIOUS EVENTS AND
LASTING MEMORIES

ONCE A PROMINENT SEAT
OF GOVERNMENT, NOW
REIMAGINED BY NICCOLO
HOTELS AS THE LAST WORD
IN CONTEMPORARY CHIC,
THE MURRAY, HONG KONG,
A NICCOLO HOTEL IS THE MOST
INFLUENTIAL OF CITY ICONS.

One of the great architectural prizes in Hong Kong SAR of China, the flagship 1960s building is as recognisable for the breathtaking archways that frame its entrance as it is notable in the city's remarkable history.

Beautifully restored and masterfully reconceived as a beacon of style by British architects Foster + Partners, the 336 room hotel adds a fresh dynamic to Hong Kong's most desirable of addresses, offering a sense of glamour for the savvy traveller.

Raised high on Central District's Cotton Tree Drive, and nestled beside eight hectares of verdant parkland, The Murray affords its guests not only definitive views of the city and The Peak, but also a sanctuary from the world below.

In short, The Murray takes Niccolo's uncompromising promise of "New Encounters. Timeless Pleasures" to a new level.



THE MURRAY
HONG KONG
—
A NICCOLO HOTEL


MICHELIN
2025

LOCATION

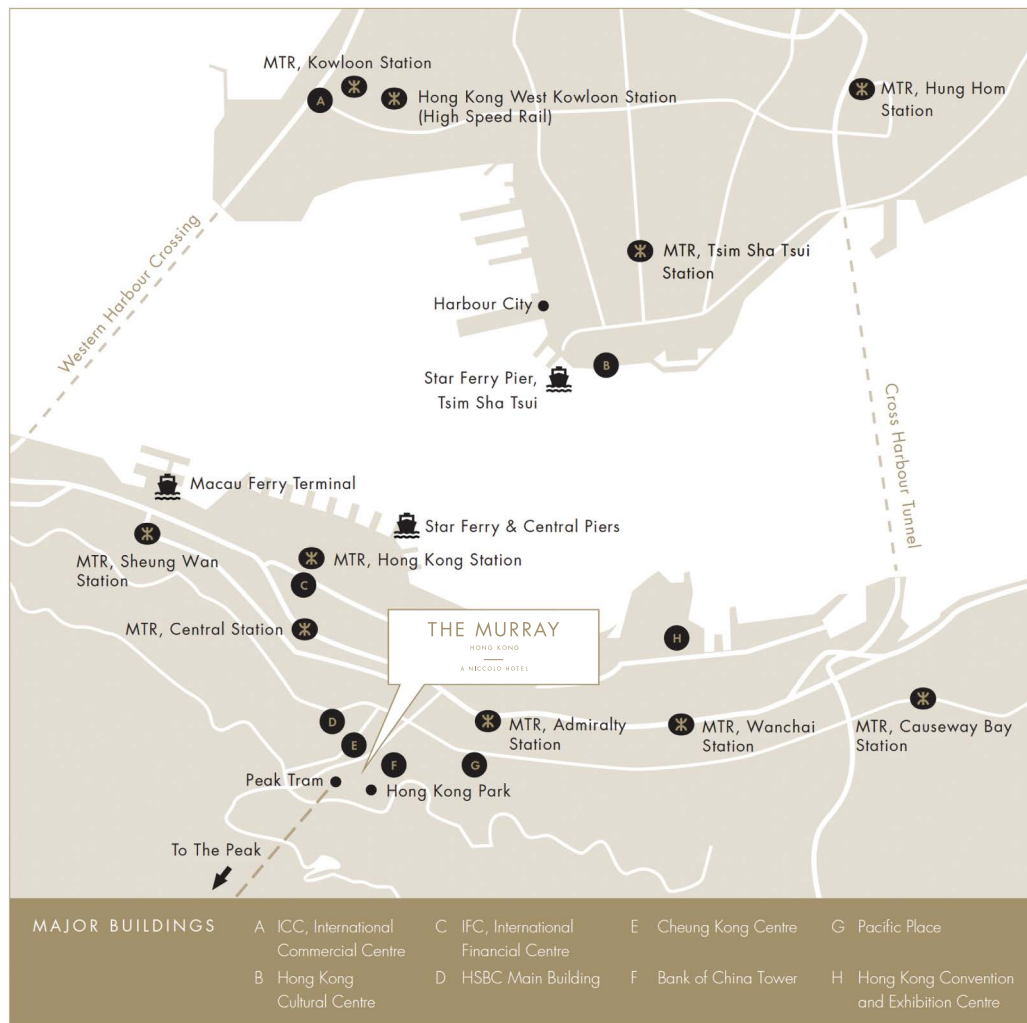
The Murray enjoys a unique location between the central commercial hub and the green oasis of Hong Kong Park. The Central MTR subway station is within a 10-minute walk. From this major station, any part of the city is easily reached.

FACILITIES

The wellbeing of our guests is essential to our ethos. Our in-house guide to healthy living highlights the best jogging trails, detailed gym programmes, and super-food menus. Guests seeking rejuvenation can relish in the nourishment of customised rituals in one of our exclusive spa suites, followed by a dip in our elegant indoor pool.

SIGNATURE EXPERIENCES

Our Signature Experiences go to the extra mile to make every stay remarkable. Multilingual **Niccolo City Insiders**, a new generation of in-the-know concierges, offer access and information to Hong Kong's best-kept secrets. The **Niccolo Lecture Series** invites guests to gain insights and ideas from some of the world's most respected thought leaders.

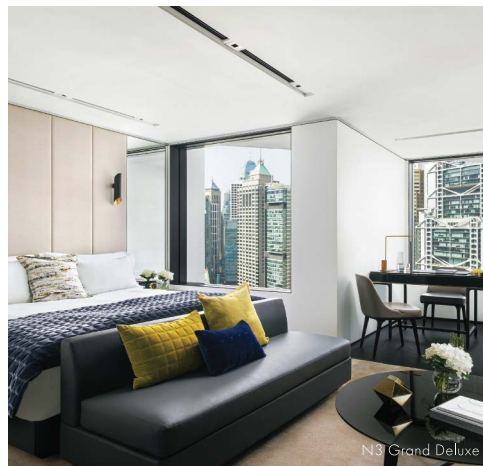


Guestrooms

From 38 to 50 square metres, The Murray's guest rooms are generously proportioned living spaces. Each comes with a beautifully designed en-suite wet area, featuring rare marble-lined walls and floor, as well as luxurious grooming amenities by Grown Alchemist. N2 Grand and N3 Grand Deluxe rooms offer a separate bath and shower room.

Suites

From 75 to 225 square metres in size, The Murray's elegantly appointed suites surpass for space and comfort – each with separate, sumptuously furnished living areas, a grand bathroom, walk-in closet and personal bar. The eponymous 225 square-metre Murray Suite, with its panoramic views of the city, and the 125 square-metre Penthouse Suite provides the ultimate accommodation for well-heeled travellers used to the finest creature comforts.



THE MURRAY

HONG KONG

A NICCOLO HOTEL

GUESTROOMS AND SUITES

Accommodation

Extraordinarily spacious accommodation awaits you. Finished in natural stone, leather and plush textiles, these sanctuaries radiate sophistication. In an architectural masterstroke, each room and suite features large, recessed windows. This innovation invites abundant daylight into the rooms without attracting the heat of the sun, winning many accolades for energy-efficiency.

Fine bed and bath amenities coupled with the team's care for detail and dedication to exemplary anticipatory service will make each stay a delightfully comfortable and memorable encounter.

- Bath amenities by Grown Alchemist
- Heated bathroom mirrors
- Luxury linens and pillows
- Electronic in-room safe
- Laundry and valet
- 24-hour in-room dining service
- Personal Bar with coffee machine and kettle
- Complimentary broadband wired and wireless internet connectivity
- Smart phone docking station and bedside lighting controls



Room Type	Area		No. of Rooms
	Sqm	Sqf	
SUPERIOR	38	409	70
N1 DELUXE	47	505	70
N2 GRAND	50	540	93
N3 GRAND DELUXE	50	540	65
EXPLORER SUITE	75	810	10
SIGNATURE SUITE	75	810	24
COTTON TREE & PARK SUITE	100	1,076	1&1
PENTHOUSE SUITE	125	1,345	1
THE MURRAY SUITE	225	2,422	1

THE MURRAY

HONG KONG

A NICCOLO HOTEL

Capacities are indicative and subject to regulation approval.

RESTAURANTS & BARS

Welcome to **Popinjays**, the Italian rooftop restaurant and bar at The Murray Hong Kong, a Niccolo Hotel. Spanning 520 square metres, our wraparound terrace provides a breathtaking backdrop for enjoying Instagram-worthy views while mingling with the fashionable crowd.

Indulge in a menu brimming with authentic Italian dishes, crafted with the finest ingredients. Complement your meal with a world-class selection of classic cocktails, specialty spirits, and enticing bar snacks, making for an unforgettable dining experience nestled in the sky.

With floor-to-ceiling windows overlooking the picturesque St John's Cathedral, and more than a hint of sophistication, the elegant **Garden Lounge** on the Upper Ground level serves signature afternoon teas alongside refined Modern Cantonese flavours.

The lounge exudes contemporary aesthetics of cool grey and gold accents and offers outdoor seating

by the lush lawn, available for those who prefer a relaxed setting or who are visiting with pets.

Welcome to **The Tai Pan**, a modern French bistro where the inviting glow of an open flame meets the joy of great company. Our vibrant open kitchen is the heart of the experience, where succulent seafood sizzles and expertly grilled steaks take center stage, each dish crafted with dedication and pride. We celebrate the spirit of convivial bistro fare, offering comforting and flavour rich dishes that bring people together in a warm and welcoming atmosphere.

As our carving trolley makes its rounds, the sound of clinking wine glasses and shared laughter fills the air. Enjoy the al fresco seating on our terrace, a perfect gathering spot for friends, families, and even furry companions. Join us for tantalizing flavours and an unforgettable atmosphere — come for the food, stay for the vibe.

Murray Lane is home to an impressive collection of international whiskeys and expertly crafted highball drinks with New York bites, surrounded by curated art. Murray Lane is the destination for a banker's breakfast, business lunch, specialty coffees on the go and aperitivo hours.

MIÁN is an upscale Chinese dining destination in Hong Kong offering the eight great regional cuisines of China within a stylish and elegant ambiance. With its seamless service, contemporary interiors and terrace, it is the ideal setting for memorable gatherings.

MOMENTOUS MEETINGS & EVENTS

Designed from the ground up to be the foremost of social, meeting and event spaces in the city, The Murray is peerless. Distinction, quality, capacity and service define our approach to facilitating gatherings. Hosting is our specialism. We are as skilled in the art of wedding and celebration design as we are in the organisation of launches, shows and business meetings.

Whether your event is modest or maximalist, powered by seamless technology or celebrating the simple pleasure of togetherness, set indoors or under the sun, we have the space and the expertise to realise your vision and enchant your guests.

Corporate Events

From conferences, exhibitions and other prominent gatherings in the contemporary Niccolo Room to private meetings in our inter-connected, ultra-smart Cassia Room, The Murray offers organisers an array of meeting spaces and packages to select from.

Celebrations and Social Events

Be it a full moon dinner to spread the new found joy, a lavish birthday gathering, or an indulgent annual dinner to reward success, celebrations at The Murray promise to be truly refined and memorable.

From the divisible and contemporary Niccolo Room, the iconic and all-weather event space The Arches, the pet-friendly **The Tai Pan Terrace** in an al fresco garden setting, to stylish restaurants and bars available for private hire, The Murray is designed to be the epicentre of social events in the city.

Events in Top Suites

For discrete launch events, private viewings, stylish meetings and occasions of an exclusive nature, the spacious and opulent top suites offer an all-inclusive solution designed to impress. Situated in proximity to each other on the 23rd floor of the hotel, the four top suites – The Murray Suite, Penthouse Suite, Park Suite and Cotton Tree Suite surpass for space and comfort.

With hypnotic views of Hong Kong's cityscape or parks, each suite boasts an elegantly furnished living area, a separate dining area, a grand bathroom and seamless technology.

Car Showcases

Framed by the iconic archways, the car park in the former Murray Building was transformed into The Arches, a semi-outdoor function space at The Murray. The Arches is now connected to the open-air The Tai Pan Terrace via a ramp which was once a driveway to the car park. Versatile, spacious and sure to impress, **The Arches** and **The Tai Pan Terrace** offer the perfect setting for car showcases and exhibitions.

FEATURES

UG / F	THE TAI PAN TERRACE	130 sqm	<ul style="list-style-type: none"> • Al fresco venue • Garden setting • Ideal for wedding ceremonies, cocktails and car displays
LEVEL 1	THE ARCHES	422 sqm	<ul style="list-style-type: none"> • Unique ramp that wraps building perimeter • Ideal for fashion catwalks and car displays • Semi al fresco venue
LEVEL 2	CASSIA ROOM	from 35 to 109 sqm	<ul style="list-style-type: none"> • Five boardrooms each featuring natural daylight • Flexible venue for private meetings and specialised events • Vistas of the urban landscape • 65' flat TV screens
LEVEL 25	NICCOLO ROOM	425 sqm	<ul style="list-style-type: none"> • Ceiling covered with luminous textile panels for custom displays • Two end walls each fitted with a 6 X 3 metres LED screen for projections • Rectangular room divisible into eight individual spaces and a pre-function area • Ideal for wedding banquets, conferences and cocktails
ROOFTOP	POPINJAYS	308 sqm 475 sqm	<p>Indoor:</p> <ul style="list-style-type: none"> • Restaurant serving modern Italian cuisine • Ideal for exclusive events, celebrations and cocktails • The Aviary private dining room for up to 20 guests, with an adjoining private terrace <p>Outdoor:</p> <ul style="list-style-type: none"> • Panoramic 270 degree views, overlooking The Peak, St John's Cathedral and Hong Kong Park • Bar tended by leading mixologists

FUNCTION ROOM CAPACITIES (LOWER FLOORS)

	AREA Sq.m. / Sqf.	HEADROOM H(m)/H(f)	COCKTAIL	LONG TABLE	ROUND TABLE	THEATRE	CLASSROOM	U-SHAPE
1 / F THE ARCHES	422 / 6,208	5 / 16	310	156	-	280	144	120
AREA A	139 / 1,495	5 / 16	100	36	-	100	48	36
AREA B	162 / 1,743	5 / 16	150	72	-	120	60	54
AREA C	121 / 1,302	5 / 16	60	48	-	60	36	30
2 / F CASSIA ROOM 3-5	109 / 1,180	2.4 / 8	60	36	60	60	36	45
CASSIA ROOM 3	35 / 380	2.4 / 8	20	12	20	20	12	15
CASSIA ROOM 4	36 / 390	2.4 / 8	20	12	20	20	12	15
CASSIA ROOM 5	38 / 410	2.4 / 8	20	12	20	20	12	15
CASSIA ROOM 6-7	73 / 790	2.4 / 8	40	24	40	40	24	30
CASSIA ROOM 6	35 / 380	2.4 / 8	20	12	20	20	12	15
CASSIA ROOM 7	38 / 410	2.4 / 8	20	12	20	20	12	15

Capacities are indicative and subject to regulation approval.

FUNCTION ROOM CAPACITIES (UPPER FLOORS)

	AREA Sq.m. / Sqf.	HEADROOM H(m)/H(f)	COCKTAIL	LONG TABLE	ROUND TABLE	THEATRE	CLASSROOM	U-SHAPE
23 / F MURRAY SUITE	225 / 2,240	2.4 / 8	40	24	20	30	24	18
PENTHOUSE SUITE	125 / 1,345	2.4 / 8	15	6	-	-	-	-
COTTON TREE SUITE	100 / 1,075	2.4 / 8	12	6	-	-	-	-
PARK SUITE	100 / 1,075	2.4 / 8	12	6	-	-	-	-
25 / F NICCOLO ROOM	425 / 4,550	3.3 / 11	270	192	240	340	198	129
NICCOLO ROOM 1-4	144 / 1,549	3.3 / 11	120	56	84	160	90	57
NICCOLO ROOM 1	36 / 387	3.3 / 11	30	14	12	32	18	15
NICCOLO ROOM 2	36 / 387	3.3 / 11	30	14	12	32	18	15
NICCOLO ROOM 3	36 / 387	3.3 / 11	30	14	12	32	18	15
NICCOLO ROOM 4	36 / 387	3.3 / 11	30	14	12	32	18	15
NICCOLO PRE-FUNCTION ROOM	36 / 387	3.3 / 11	30	14	12	32	18	15
NICCOLO ROOM 5-8	144 / 1,549	3.3 / 11	120	56	84	160	90	57
NICCOLO ROOM 5	36 / 387	3.3 / 11	30	14	12	32	18	15
NICCOLO ROOM 6	36 / 387	3.3 / 11	30	14	12	32	18	15
NICCOLO ROOM 7	36 / 387	3.3 / 11	30	14	12	32	18	15
NICCOLO ROOM 8	36 / 387	3.3 / 11	30	14	12	32	18	15

Capacities are indicative and subject to regulation approval.

RESTAURANT CAPACITIES (LOWER FLOORS)

	AREA Sq.m. / Sqf.	HEADROOM H(m)/H(f)	COCKTAIL	LONG/ SQUARE TABLE	ROUND TABLE	THEATRE	CLASSROOM	U-SHAPE
LG MURRAY LANE	103 / 1,108	2.1-3 / 6.9-9.9	160	113	-	-	-	-
INDOOR	103 / 1,108	-	60	39	-	-	-	-
OUTDOOR	-	-	100	74	-	-	-	-
UG GARDEN LOUNGE	225 / 2,735	3.3 / 10.8	126	84	-	-	-	-
INDOOR	175 / 1,875	-	90	60	-	-	-	-
OUTDOOR	80 / 860	-	36	24	-	-	-	-
THE TAI PAN TERRACE	423 / 4,551	-	100	114	-	120	-	-
THE TAI PAN	238 / 2,560	3.3 / 10.8	150	97	-	-	-	-
INDOOR	165 / 1,775	-	100	65	-	-	-	-
OUTDOOR	73 / 785	-	50	32	-	-	-	-
THE LAWN	174 / 1,876	-	100	40	-	88	-	-
THE LAWN - GARDEN LOUNGE	87 / 938	-	50	20	-	44	-	-
THE LAWN - THE TAI PAN	87 / 938	-	50	20	-	44	-	-
MIÁN - MAIN DINING AREA	127 / 4,551				46			
PRIVATE ROOM	54 / 585			BANQUET	28			
OUTDOOR SEATING	120 / 1,290				30			

Capacities are indicative and subject to regulation approval.

RESTAURANT CAPACITIES (UPPER FLOORS)

	AREA Sq.m. / Sqf.	HEADROOM H(m)/H(f)	COCKTAIL	LONG/ SQUARE TABLE	ROUND TABLE	THEATRE	CLASSROOM	U-SHAPE
26/F POPINJAYS TOTAL (LEVEL 26)	783 / 8,420	3.1 / 10	650	176	-	120	72	45
BAR TERRACE FOYER (OUTDOOR)	49 / 526	-	-	-	-	-	-	-
POPINJAYS RESTAURANT	458 / 4,926	3.1 / 10	390	120	-	120	72	45
RESTAURANT INDOOR	197 / 2,124	-	120	100	-	120	72	45
AVIARY PRIVATE ROOM (INDOOR)	33 / 350	-	30	20	-	-	-	-
AVIARY TERRACE (OUTDOOR)	51 / 553	-	30	-	-	-	-	-
TERRACE C (OUTDOOR)	81 / 871	-	80	-	-	-	-	-
TERRACE D (OUTDOOR)	96 / 1,028	-	100	-	-	-	-	-
POPINJAYS BAR	276 / 2,966	3.1 / 10	260	-	-	-	-	-
BAR INDOOR	78 / 840	-	60	-	-	-	-	-
TERRACE A1	41 / 445	-	40	-	-	-	-	-
TERRACE A2	80 / 861	-	80	-	-	-	-	-
TERRACE B	76 / 821	-	80	-	-	-	-	-

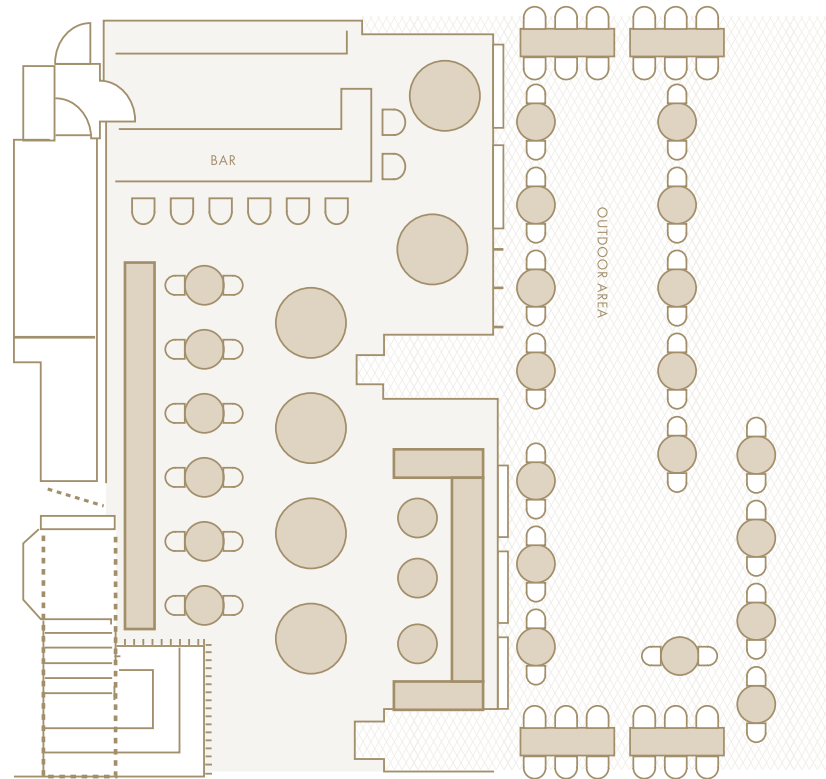
Capacities are indicative and subject to regulation approval.



MURRAY LANE

Murray Lane

Murray Lane is home to an impressive collection of international whiskeys and expertly crafted highball drinks with New York bites, surrounded by curated art. Murray Lane is the destination for a banker's breakfast, business lunch, specialty coffees on the go and aperitivo hours.



THE MURRAY
 HONG KONG
 A NICCOLO HOTEL

Venue	Area		Headroom		Set Up	
	Sqm	Sqf	H(m)	H(f)	Cocktail	Long Table
MURRAY LANE	103	1,108	2.1-3	6.9-9.9	160	113
INDOOR	103	1,108	-	-	60	39
OUTDOOR	-	-	-	-	100	74



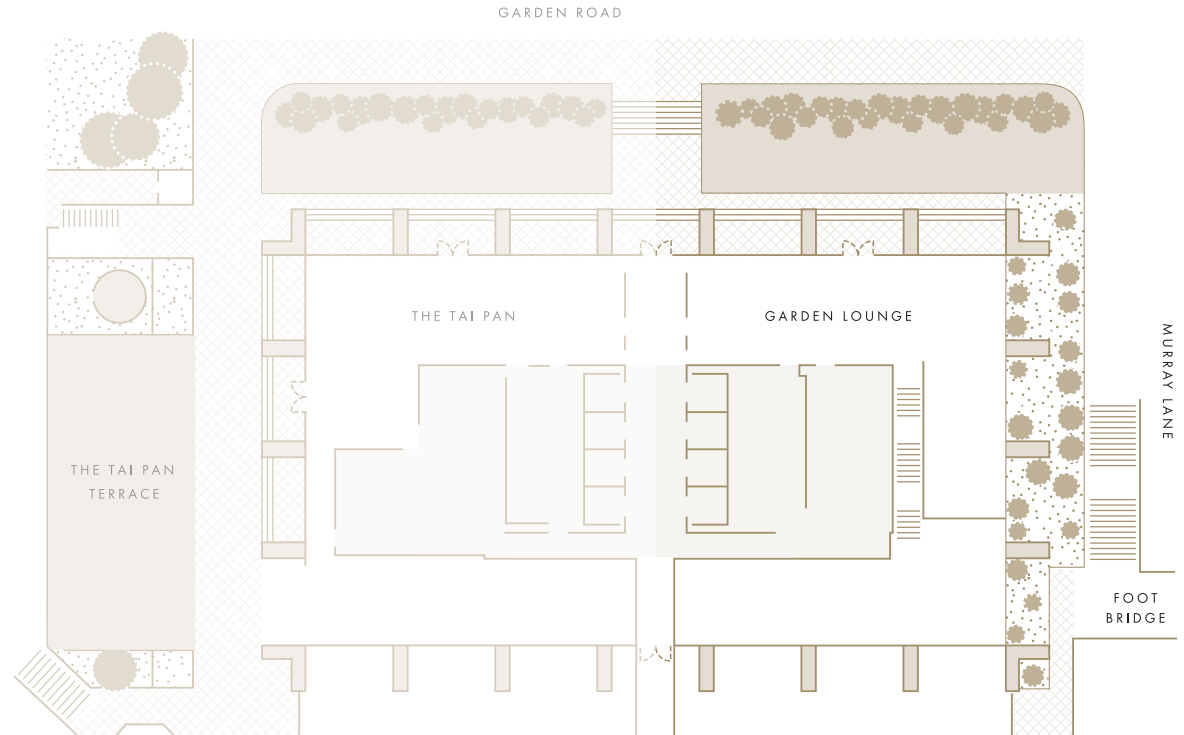
GARDEN LOUNGE

U G / F

Garden Lounge

With floor-to-ceiling windows overlooking the picturesque St John's Cathedral, and more than a hint of sophistication, the elegant Garden Lounge on the Upper Ground level serves signature afternoon teas alongside refined Modern Cantonese flavours.

The lounge exudes contemporary aesthetics of cool grey and gold accents and offers outdoor seating by the lush lawn, available for those who prefer a relaxed setting or who are visiting with pets.



Venue	Area		Headroom		Set Up	
	Sqm	Sqf	H(m)	H(f)	Cocktail	Long Table
GARDEN LOUNGE	255	2,735	3.3	10.8	126	84
INDOOR	175	1,875	-	-	90	60
OUTDOOR	80	860	-	-	36	24

THE MURRAY

HONG KONG

A NICCOLO HOTEL

Capacities are indicative and subject to regulation approval.

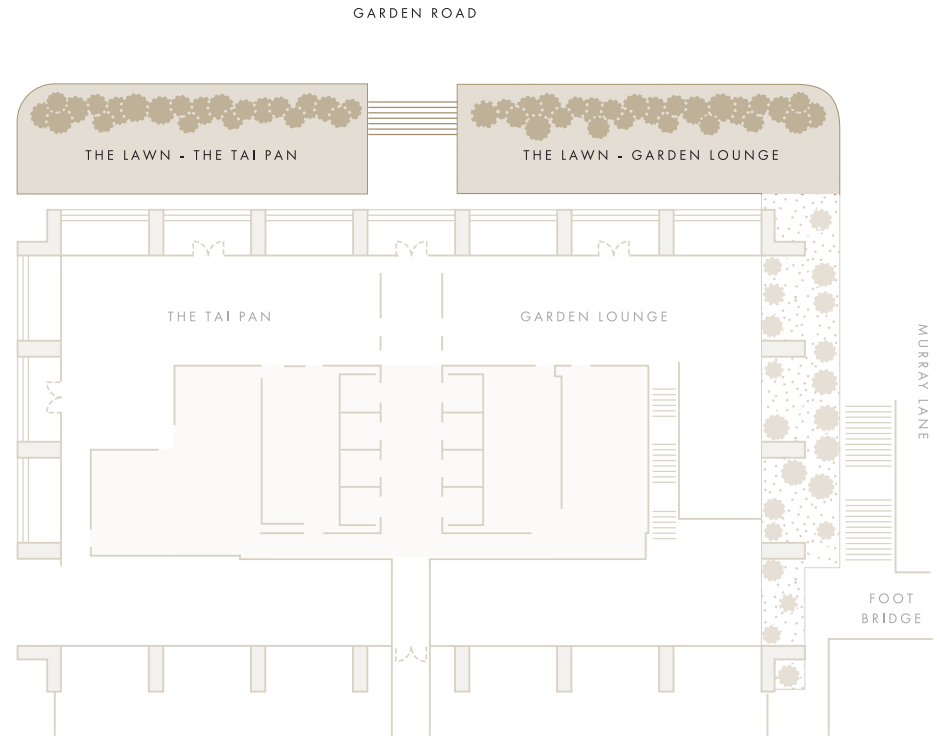


THE LAWN

U G / F

The Lawn

The exclusive outdoor green space adjoining Garden Lounge and The Tai Pan, is a charming private venue for urban garden weddings. Enclosed by lush green hedges with panoramic Central skyscraper views, its immaculate level lawn perfectly accommodates outdoor wedding ceremonies, floral arch setups and guest seating arrangements. With seamless access to the indoor Garden Lounge's catering and reception facilities, it provides an ideal secluded romantic backdrop for intimate nuptial celebrations.



Venue	Area		Headroom		Set Up		
	Sqm	Sqf	H(m)	H(f)	Cocktail	Long Table	Theatre
THE LAWN	174	1,876	-	-	100	40	88
THE LAWN - GARDEN LOUNGE	87	938	-	-	50	20	44
THE LAWN - THE TAI PAN	87	938	-	-	50	20	44

THE MURRAY

HONG KONG
A NICCOLO HOTEL

Capacities are indicative and subject to regulation approval.



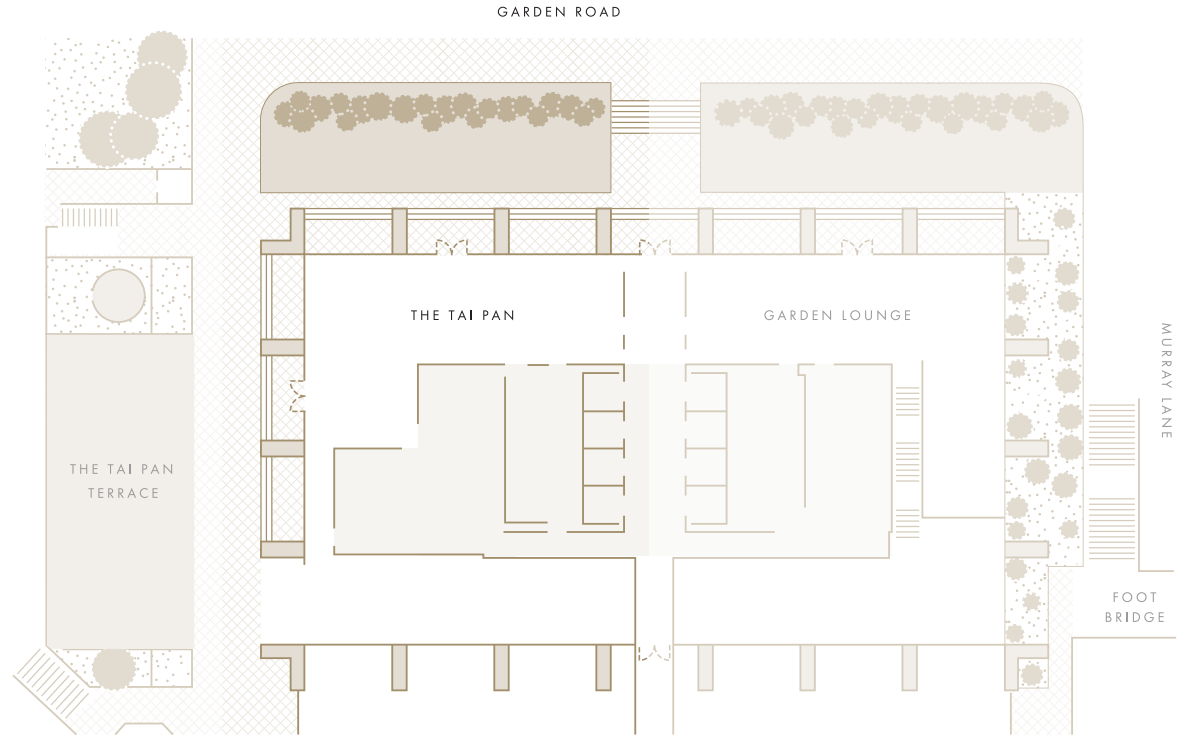
THE TAI PAN

UG / F

The Tai Pan

Welcome to The Tai Pan, a modern French bistro where the inviting glow of an open flame meets the joy of great company. Our vibrant open kitchen is the heart of the experience, where succulent seafood sizzles and expertly grilled steaks take center stage, each dish crafted with dedication and pride. We celebrate the spirit of convivial bistro fare, offering comforting and flavour rich dishes that bring people together in a warm and welcoming atmosphere.

As our carving trolley makes its rounds, the sound of clinking wine glasses and shared laughter fills the air. Enjoy the al fresco seating on our terrace, a perfect gathering spot for friends, families, and even furry companions. Join us for tantalizing flavours and an unforgettable atmosphere — come for the food, stay for the vibe.



THE MURRAY
HONG KONG
A NICCOLO HOTEL

Venue	Area		Headroom		Set Up	
	Sqm	Sqf	H(m)	H(f)	Cocktail	Long Table
THE TAI PAN	238	2,560	3.3	10.8	150	97
INDOOR	165	1,775	-	-	100	65
OUTDOOR	73	785	-	-	50	32

Capacities are indicative and subject to regulation approval.

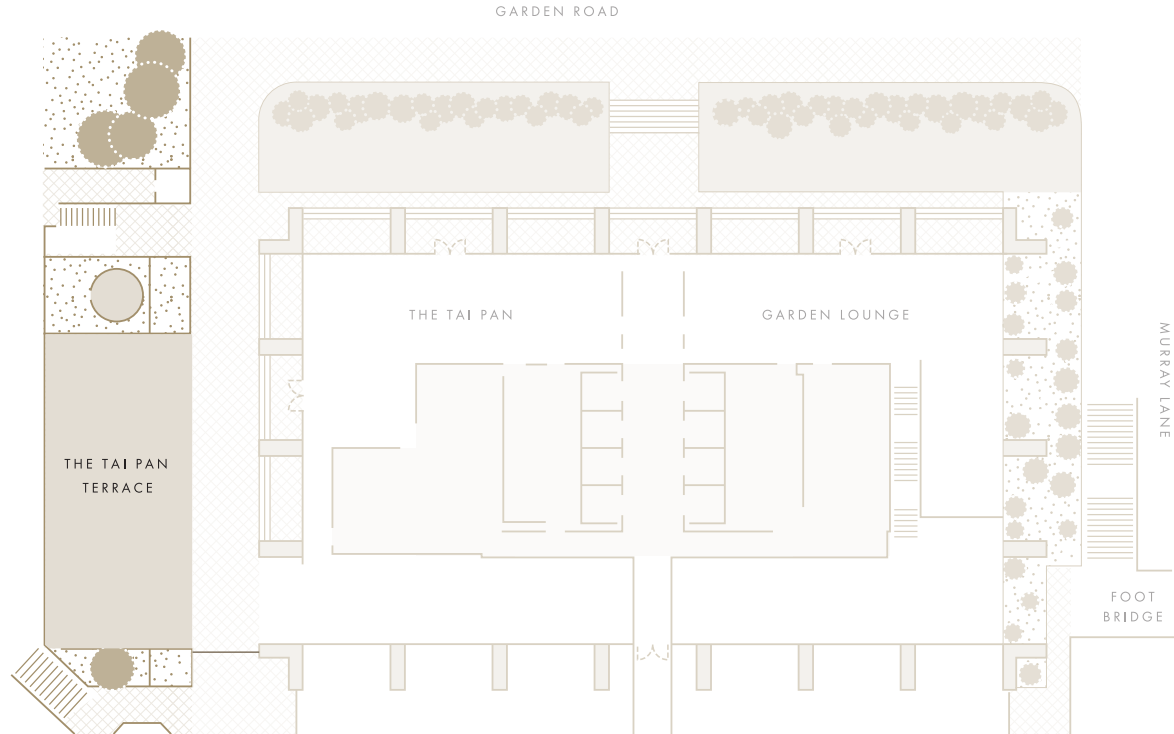
An outdoor terrace at night, featuring several large, white, geometric-patterned umbrellas. The umbrellas are illuminated from within, casting a warm glow. The terrace is furnished with round tables and wicker chairs, some with white cushions. The tables are set with plates, glasses, and small lamps. The background shows a modern building with lit windows and a large tree. The overall atmosphere is sophisticated and relaxing.

THE TAI PAN TERRACE

U G / F

The Tai Pan Terrace

Discover the allure of al fresco dining at The Tai Pan Terrace, an extension of The Tai Pan that brings the essence of lively bistro dining outdoors. Nestled amidst lush greenery, our sun-kissed, pet-friendly terrace invites you to savor a carefully curated selection of freshly prepared dishes served from the open kitchen of The Tai Pan — each crafted to evoke the warmth and familiarity of home.



THE MURRAY

HONG KONG
A NICCOLO HOTEL

Venue	Area		Set Up		
	Sqm	Sqf	Cocktail	Long Table	Theatre
THE TAI PAN TERRACE	130	1,399	100	114	120

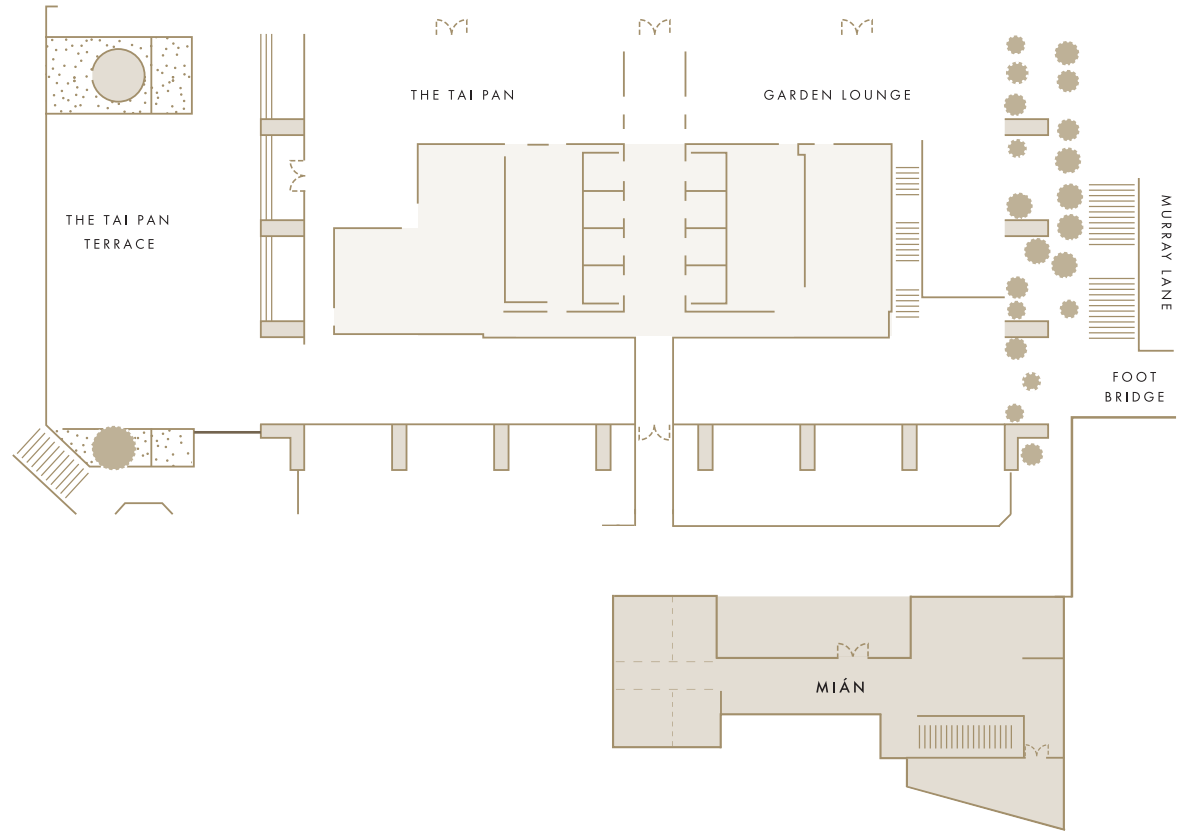


MIAN

UG / F

MIÁN

Housed in a specially commissioned two-storey pavilion adjacent to the hotel entrance, MIÁN takes inspiration from the meaningful legacy of the hotel site married with the essence of the eight great regional cuisines of China.



THE MURRAY

HONG KONG

A NICCOLO HOTEL

Venue	Set Up	Area	
	Banquet	Sqm	Sqf
MIÁN - MAIN DINING AREA	46	127	1,370
PRIVATE ROOM	28	54	585
OUTDOOR SEATINGS	30	120	1,290

Capacities are indicative and subject to regulation approval.



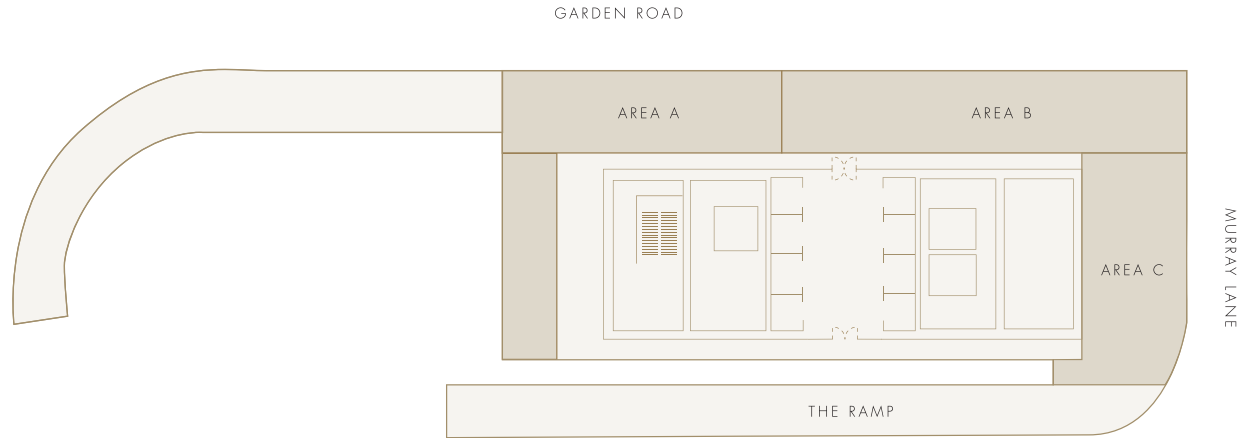
THE ARCHES

LEVEL 1

The Arches

What was once a carpark ramp following the inner perimeter walls of the emblematic Murray Building is now a distinctively unique event space.

The Arches is semi-outdoors, offering a unique setting quality from both a practical and experiential perspective. Sheltered overhead and with large arched apertures inviting natural ventilation, this is a venue most suited to weddings, runway shows, exhibitions, car showcases and corporate gatherings.



Venue	Area		Headroom		Set Up				
	Sqm	Sqf	H(m)	H(f)	Cocktail	Long Table	Theatre	Classroom	U-shape
THE ARCHES	577	6,208	5	16	310	156	280	144	120
AREA A	139	1,495	5	16	100	36	100	48	36
AREA B	162	1,743	5	16	150	72	120	60	54
AREA C	121	1,302	5	16	60	48	60	36	30

THE MURRAY

HONG KONG

A NICCOLO HOTEL

Capacities are indicative and subject to regulation approval.



CASSIA ROOM



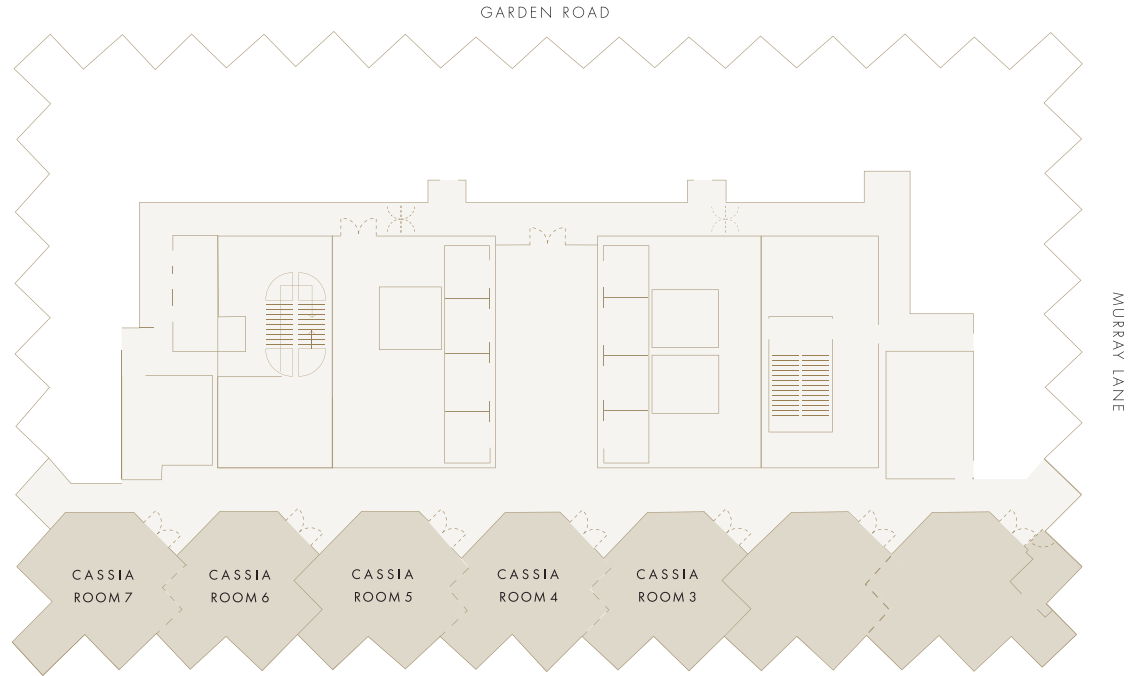
LEVEL 2

Cassia Room

In each of these ultra-smart rooms, natural daylight cascades through the oversized windows that grace and exemplify the building's iconic façade.

Each boardroom can accommodate up to twenty persons. Each of them are equipped with 65" TV screens and are self-contained, making them a perfect location for private meetings or special events.

If a larger space or zoning is required, adjacent rooms can be interconnected.



Venue	Area		Headroom		Set Up					
	Sqm	Sqf	H(m)	H(f)	Cocktail	Long Table	Round Table	Theatre	Classroom	U-shape
CASSIA ROOM 3-5	109	1,180	2.4	8	60	36	60	60	36	45
CASSIA ROOM 3	35	380	2.4	8	20	12	20	20	12	15
CASSIA ROOM 4	36	390	2.4	8	20	12	20	20	12	15
CASSIA ROOM 5	38	410	2.4	8	20	12	20	20	12	15
CASSIA ROOM 6-7	73	790	2.4	8	40	24	40	40	24	30
CASSIA ROOM 6	35	380	2.4	8	20	12	20	20	12	15
CASSIA ROOM 7	38	410	2.4	8	20	12	20	20	12	15

NICCOLO ROOM



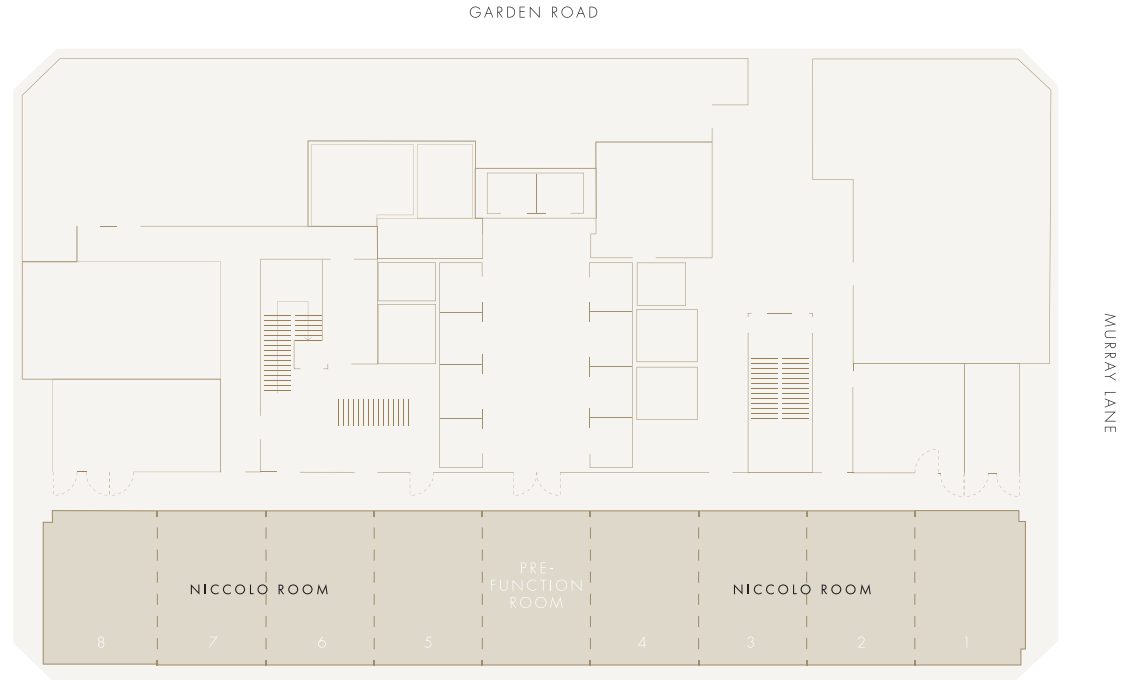
LEVEL 25

Niccolo Room

Our largest indoor meeting space is the Niccolo Room. Stylish, convivial celebrations such as weddings and cocktail parties are as at home here as conferences and exhibitions.

To create zones or a pre-function area, the room can be seamlessly partitioned into two or more spaces. These individual areas are each outfitted with wall panels that slide back to reveal 65" TV screens. Overhead are luminous textile lighting panels that can be programmed to provide a perfectly lit ambiance for your event.

On the ceiling, and on two opposing walls, cutting-edge LED panels are primed to project your customised displays. And to host your guests in style, our resident chefs offer an array of Asian and Western menus for your selection.



Venue	Area		Headroom		Set Up					
	Sqm	Sqf	H(m)	H(f)	Cocktail	Long Table	Round Table	Theatre	Classroom	U-shape
NICCOLO ROOM	425	4,550	3.3	11	270	192	240	340	198	129
NICCOLO ROOM 1-4	144	1,549	3.3	11	120	56	84	160	90	57
PRE-FUNCTION ROOM	36	387	3.3	11	30	14	12	32	18	15
NICCOLO ROOM 5-8	144	1,549	3.3	11	120	56	84	160	90	57

THE MURRAY

HONG KONG

A NICCOLO HOTEL

Capacities are indicative and subject to regulation approval.



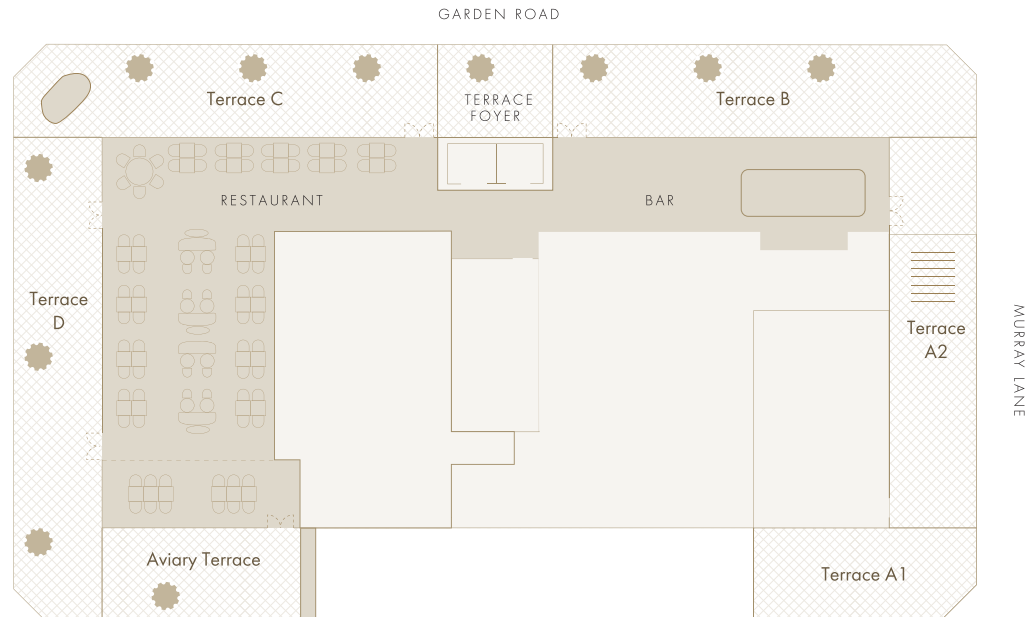
POPINJAYS

ROOFTOP

Popinjays

Welcome to Popinjays, the Italian rooftop restaurant and bar at The Murray Hong Kong, a Niccolo Hotel. Spanning 520 square metres, our wraparound terrace provides a breathtaking backdrop for enjoying Instagram-worthy views while mingling with the fashionable crowd.

Indulge in a menu brimming with authentic Italian dishes, crafted with the finest ingredients. Complement your meal with a world-class selection of classic cocktails, specialty spirits, and enticing bar snacks, making for an unforgettable dining experience nestled in the sky.



Venue	Area		Headroom		Set Up					
	Sqm	Sqf	H(m)	H(f)	Cocktail	Long Table	Round Table	Theatre	Classroom	U-shape
POPINJAYS (TOTAL)	783	8,420	3.1	10	650	176	-	120	72	45
TERRACE FOYER	49	526	-	-	-	-	-	-	-	-
POPINJAYS RESTAURANT	458	4,926	3.1	10	390	120	-	120	72	45
RESTAURANT (INDOOR)	197	2,124	3.1	10	120	100	-	120	72	45
AVIARY PRIVATE ROOM	33	350	3.1	10	30	20	-	-	-	-
AVIARY TERRACE	51	553	-	-	30	-	-	-	-	-
TERRACE C	81	871	-	-	80	-	-	-	-	-
TERRACE D	96	1,028	-	-	150	-	-	-	-	-
BAR	276	2,966	3.1	10	260	-	-	-	-	-
INDOOR	78	840	-	-	60	-	-	-	-	-
TERRACE A1	41	445	-	-	40	-	-	-	-	-
TERRACE A2	80	861	-	-	80	-	-	-	-	-
TERRACE B	76	821	-	-	80	-	-	-	-	-

THE MURRAY
HONG KONG
A NICCOLO HOTEL

Capacities are indicative and subject to regulation approval.



THE MURRAY, HONG KONG

THE MURRAY



THE MURRAY

HONG KONG

A NICCOLO HOTEL



22 COTTON TREE DRIVE, CENTRAL, HONG KONG SAR, CHINA T +852 3141 8888 THEMURRAY@NICCOLOHOTELS.COM

 THE MURRAY, HONG KONG

 THEMURRAYHK

NICCOLOHOTELS.CN | NICCOLOHOTELS.COM